

Region of Peel 18-1310C – Dundas St East Watermain Replacement

Project Update



July 15th, 2025

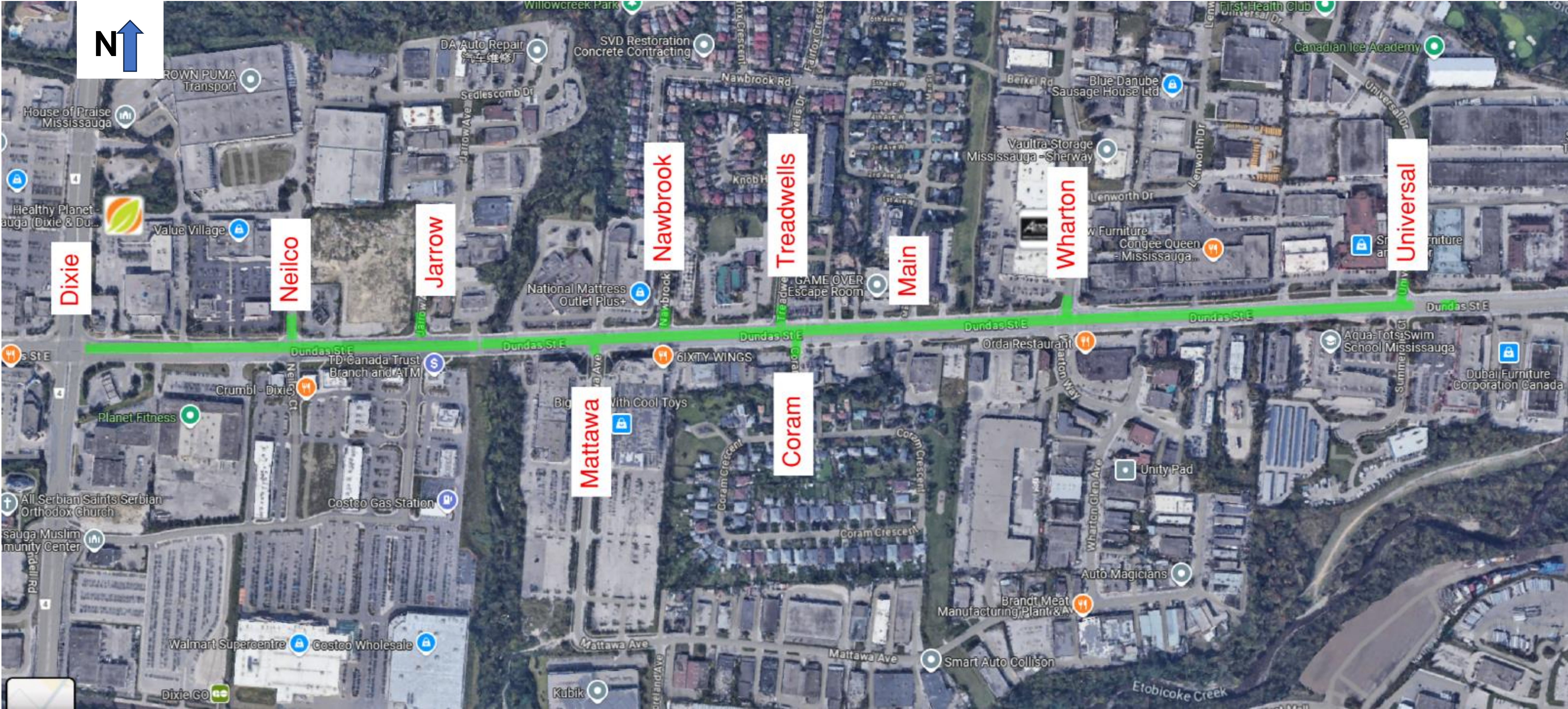


Current Project Progress:

- Complete mainline and commissioning by July 2025
- Complete connections to existing watermain and service connections by August 2025
- Complete restoration by end of September 2025

Current Site Conditions

All main line watermain is constructed and commissioned

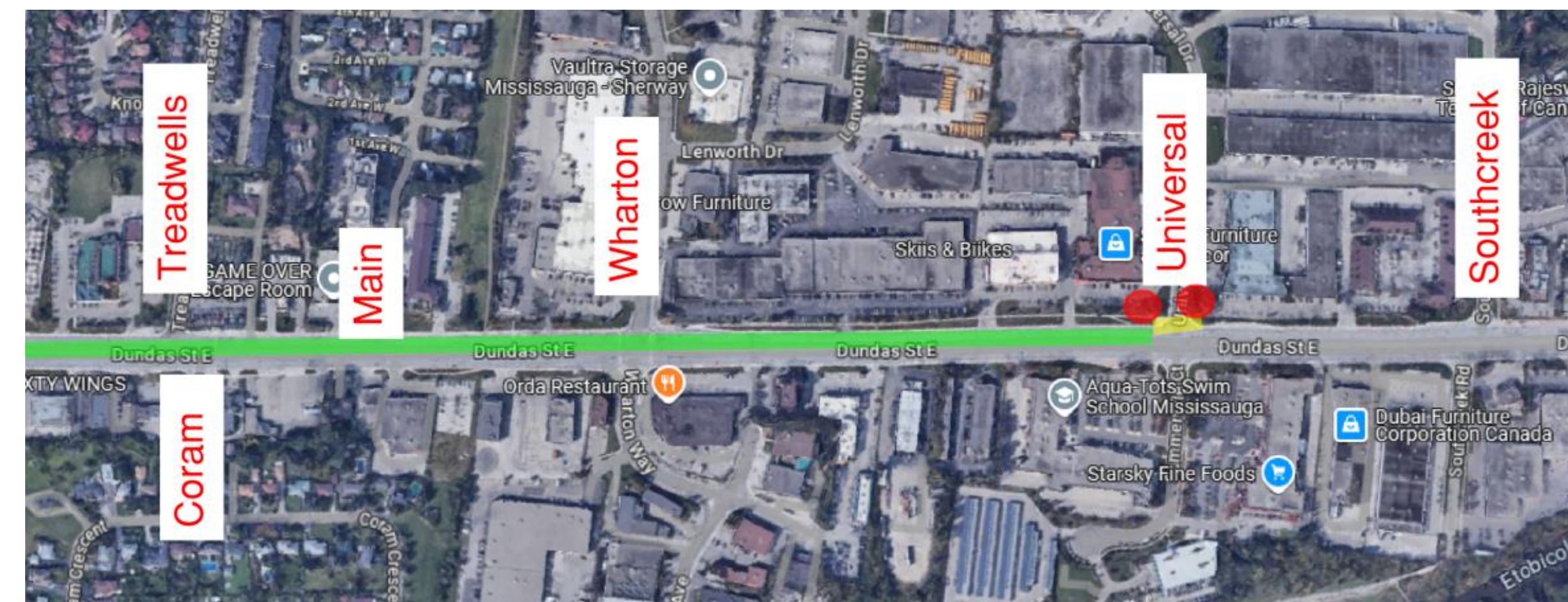


Current Site Conditions (as of July 15th)

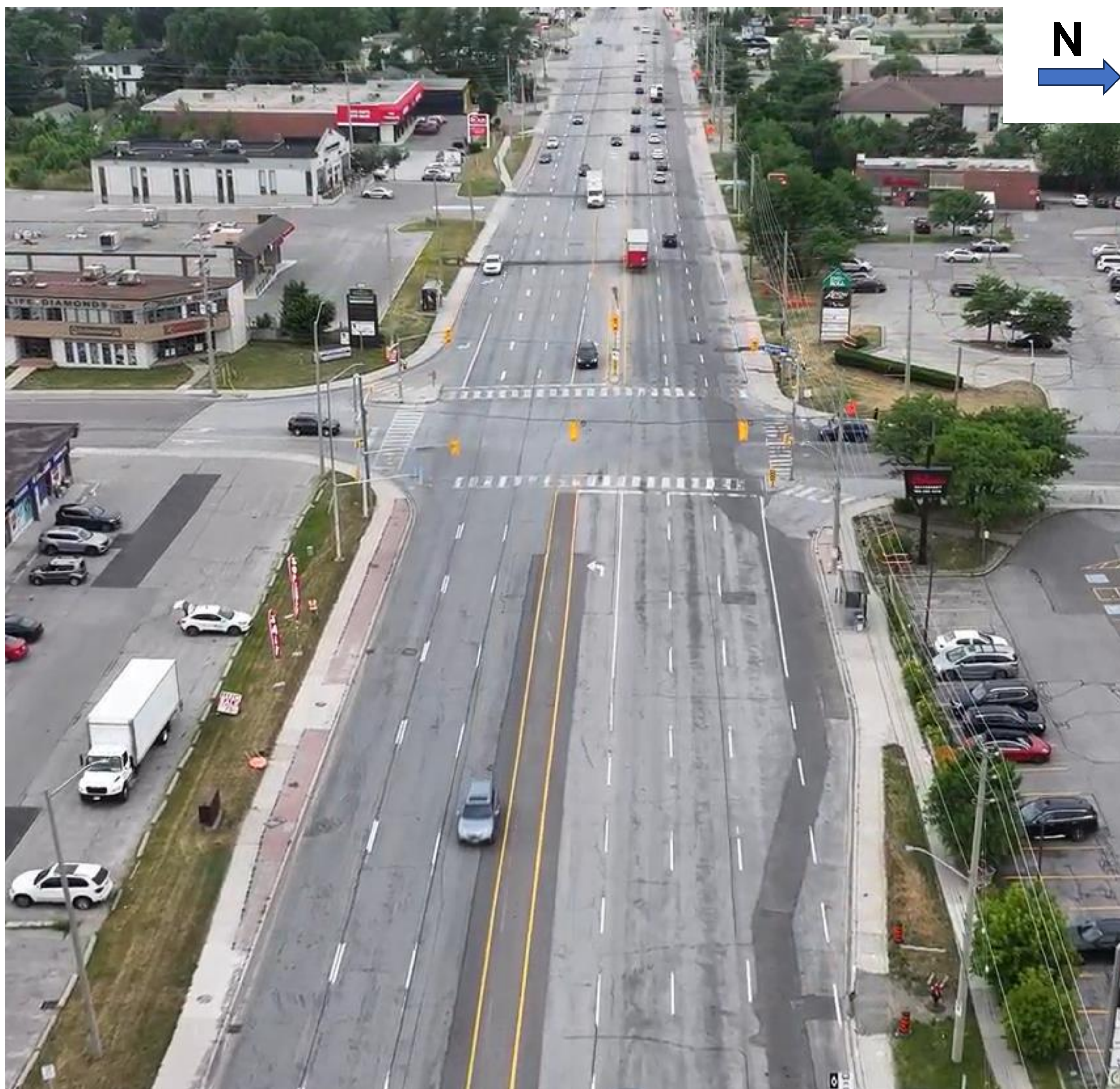


Universal Drive Intersection:

- All lanes are currently open
- Two connections will be made in this intersection

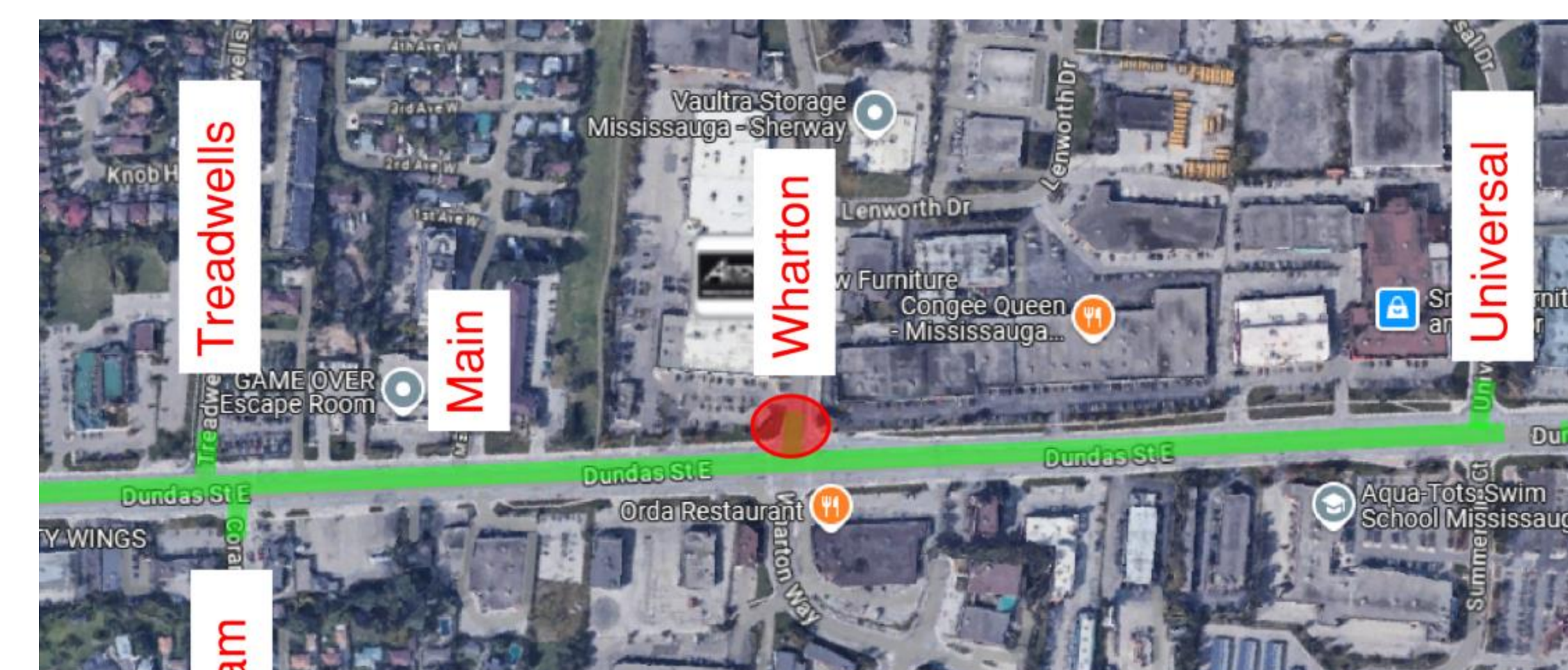


Current Site Conditions (as of July 15th)



Wharton Way Intersection:

- All lanes are currently open
- One connection will be made in this intersection

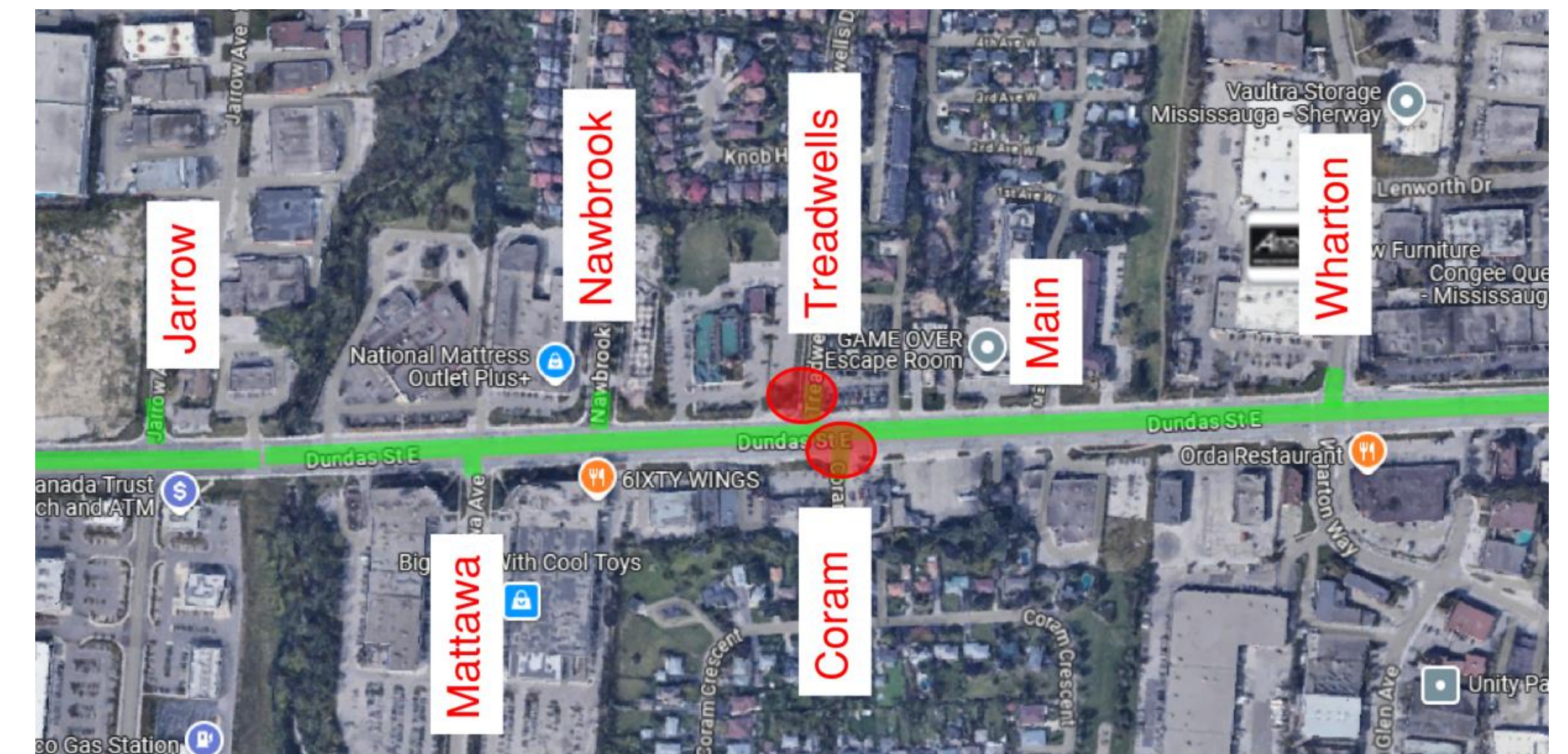


Current Site Conditions (as of July 15th)



Treadwells and Coram Intersection:

- All lanes are currently open, but are start to taper West of Treadwells for construction of a shaft near Nawbrook
- Two connections will be made in this intersection

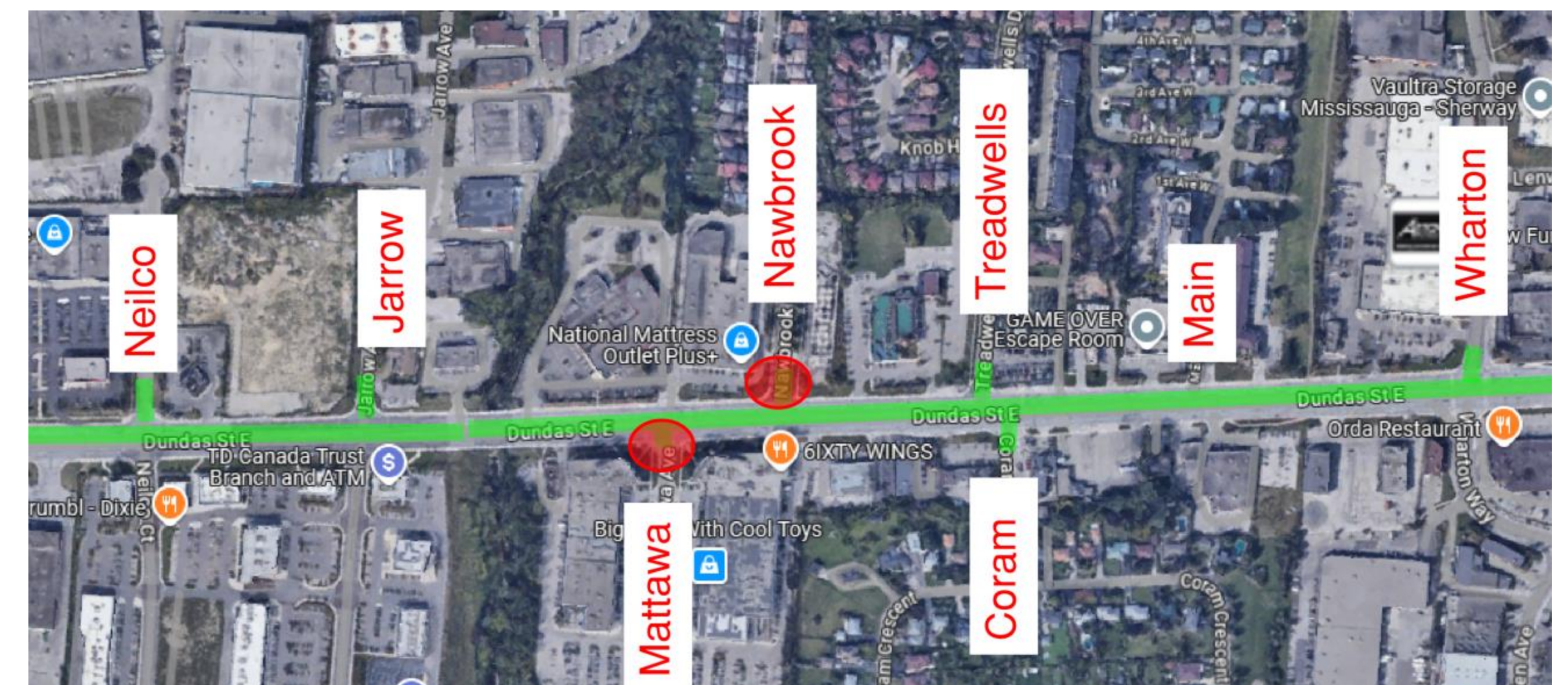


Current Site Conditions (as of July 15th)



Nawbrook and Mattawa Intersection:

- Two Westbound lanes reduced
- This work is related to a separate sanitary tunnelling project
- We are in communication with their PM regarding schedule to ensure traffic controls do not conflict
- Two connections will be made in this intersection

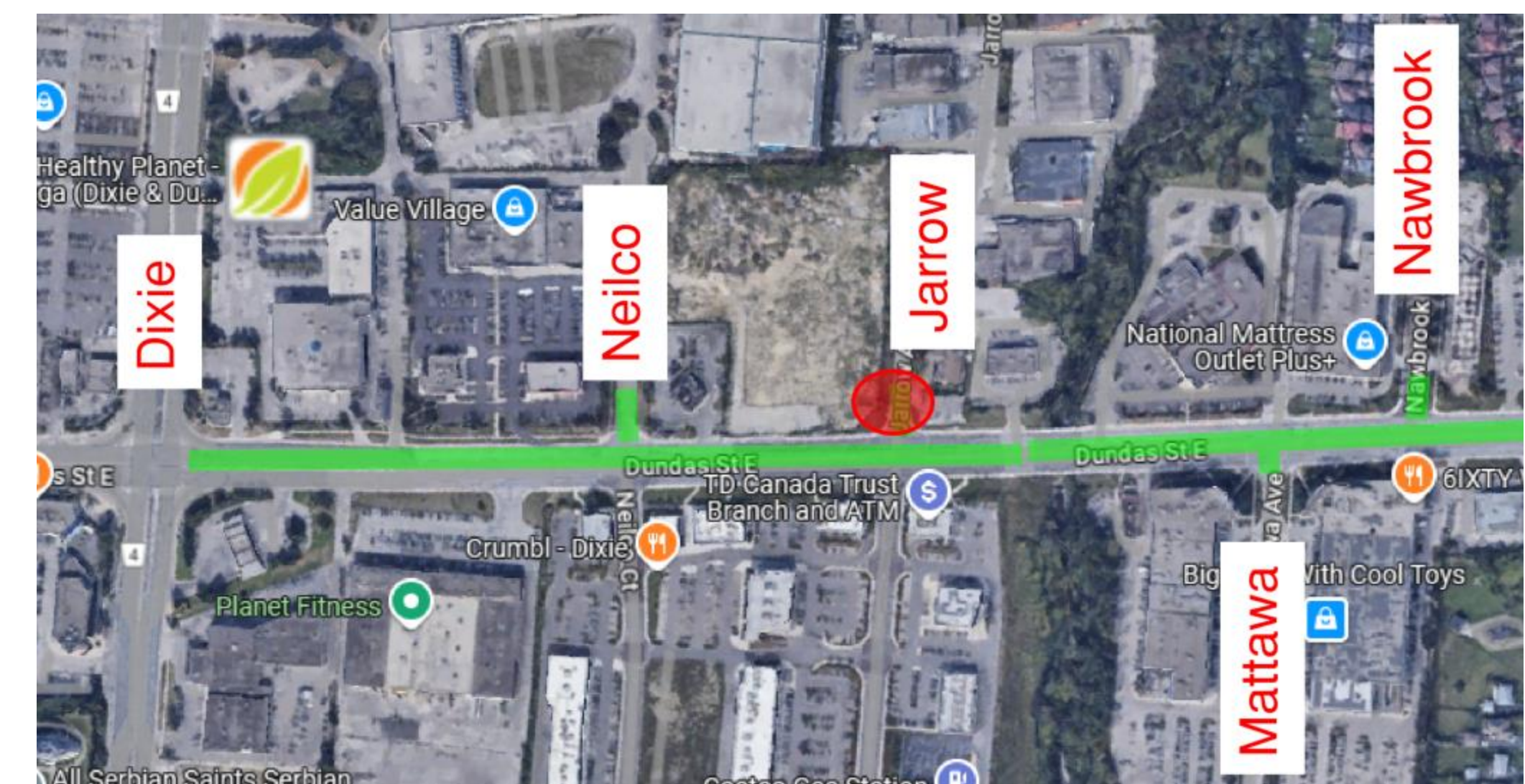


Current Site Conditions (as of July 15th)



Jarrow Intersection:

- All lanes are currently open, one lane taper starts West of Jarrow for work within a chamber at Neilco
- Two connections will be made in this intersection

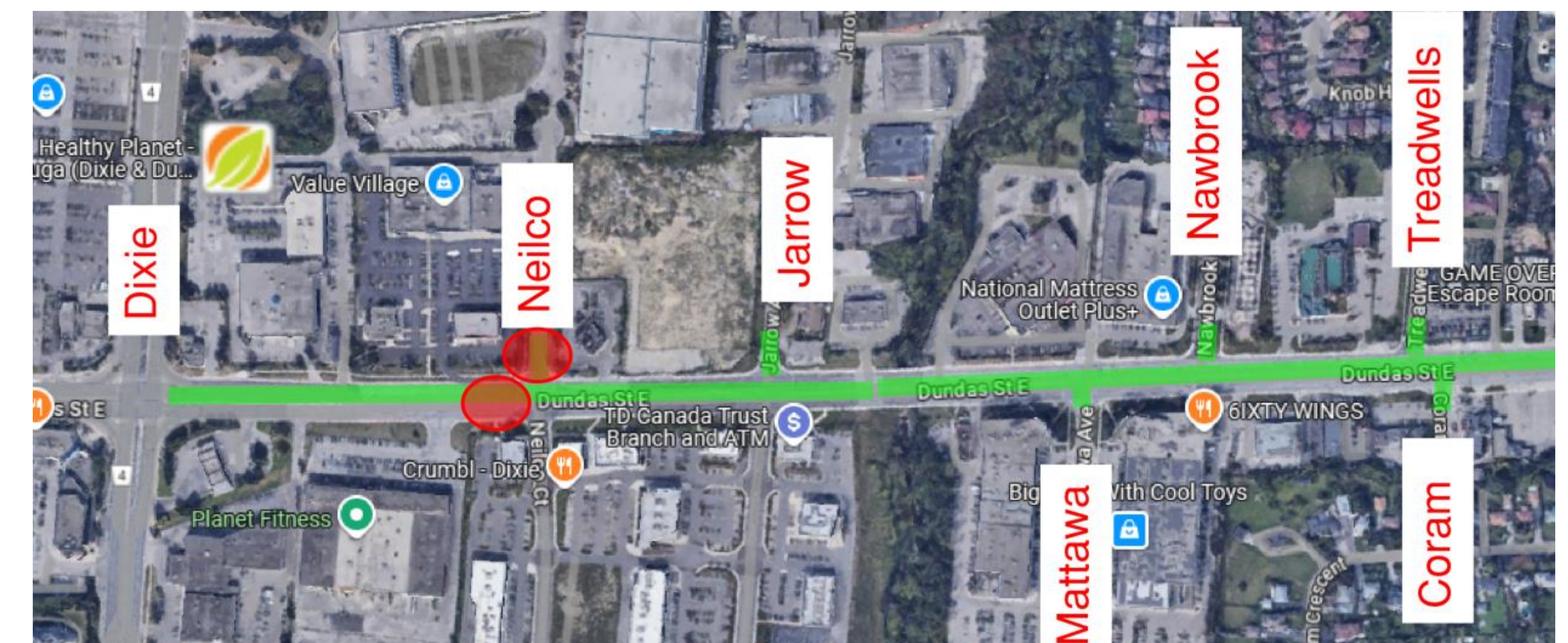


Current Site Conditions (as of July 15th)

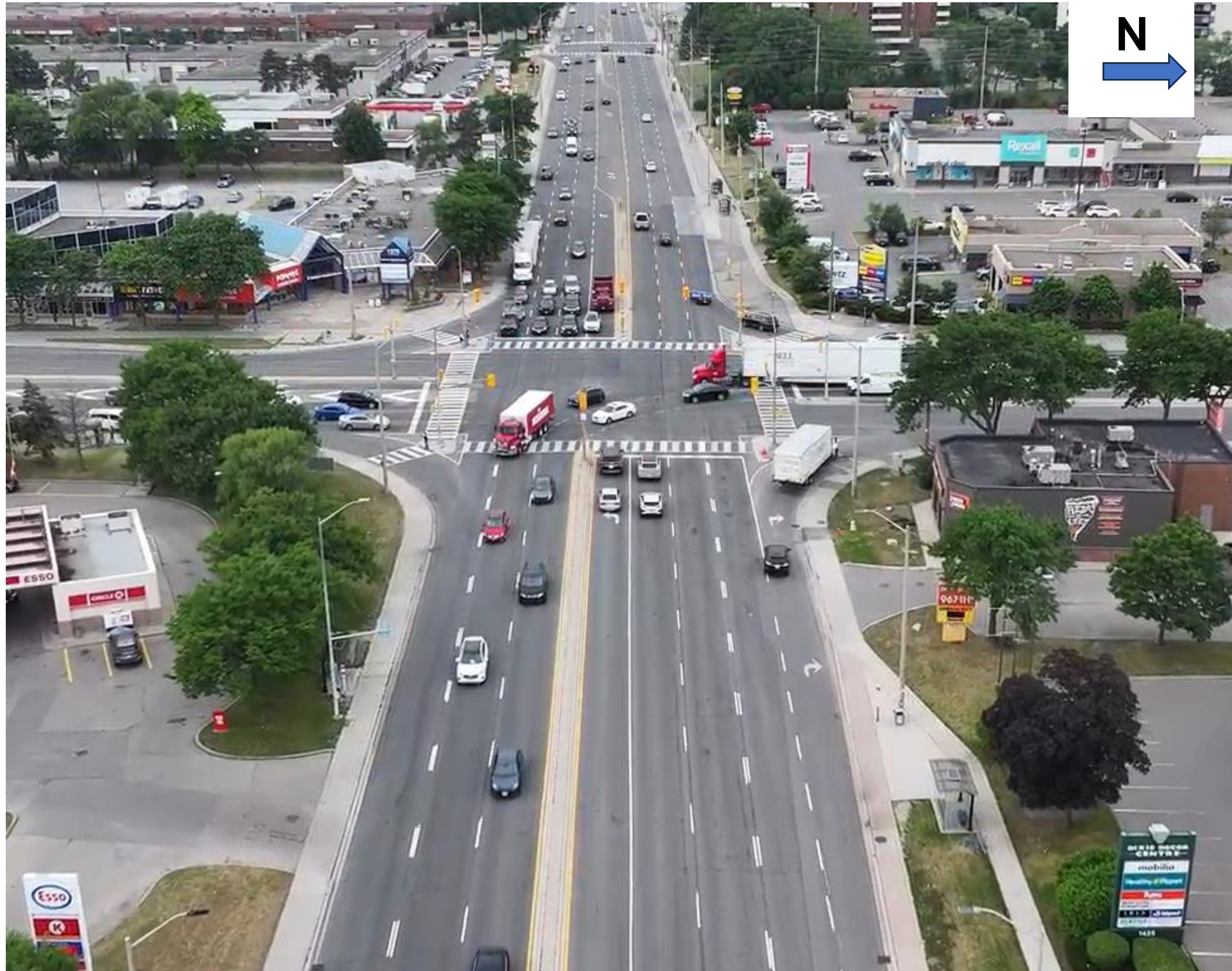


Neilco Intersection:

- One Westbound lane is closed due to chamber work, this will be complete by July 17
- Two connections will be made in this intersection



Current Site Conditions (as of July 15th)



Dixie Intersection:

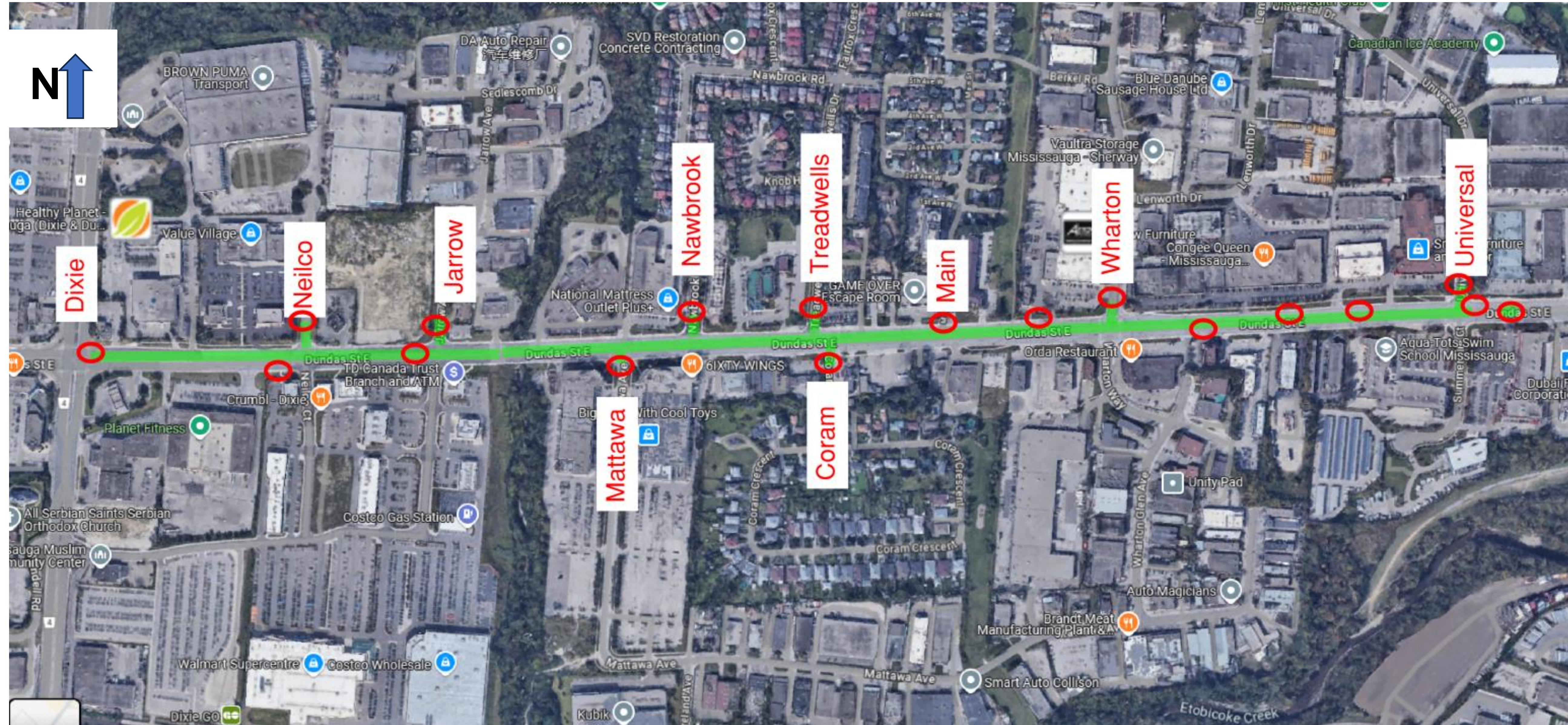
- All lanes are currently open
- One connection will be made in this intersection



Remaining Schedule

Connections to Existing System

- New watermain will be connected in 18 locations on the existing watermain system
- 11 Large and 20 small diameter service connections



Traffic impacts of watermain and service connections:

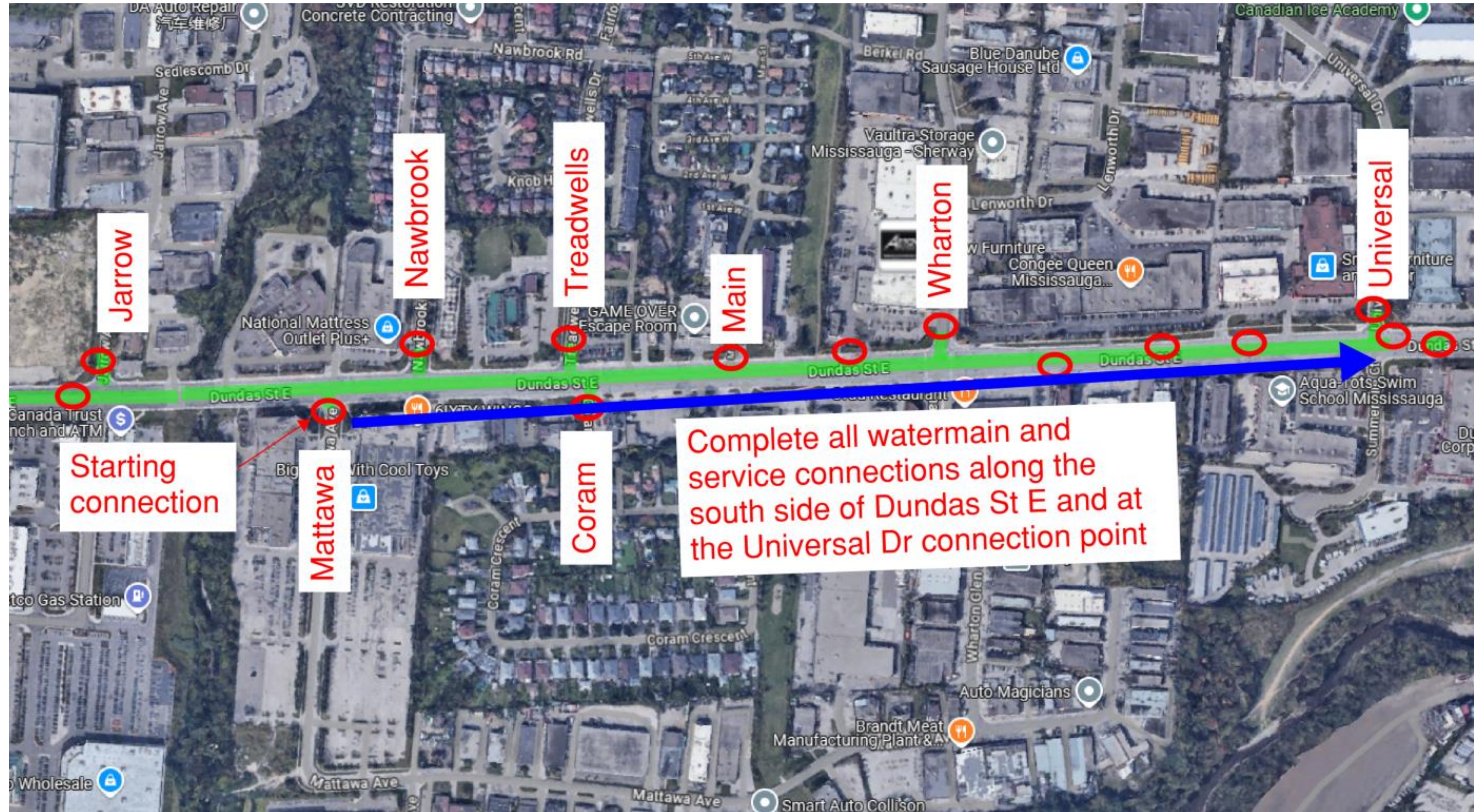
- Connections will be performed with two crews working concurrently, a maximum of two open excavations will occur simultaneously
- Each connection is performed in self contained pits excavated at the connection point. No more long trenches.
- Each large connection will take ~2 days, small connections will take 0.5-1 day
- A connection staging plan has been created to ensure traffic impacts of two connections being performed concurrently do not restrict lanes in close proximity, avoiding choke points



Remaining Schedule

Connection Staging:

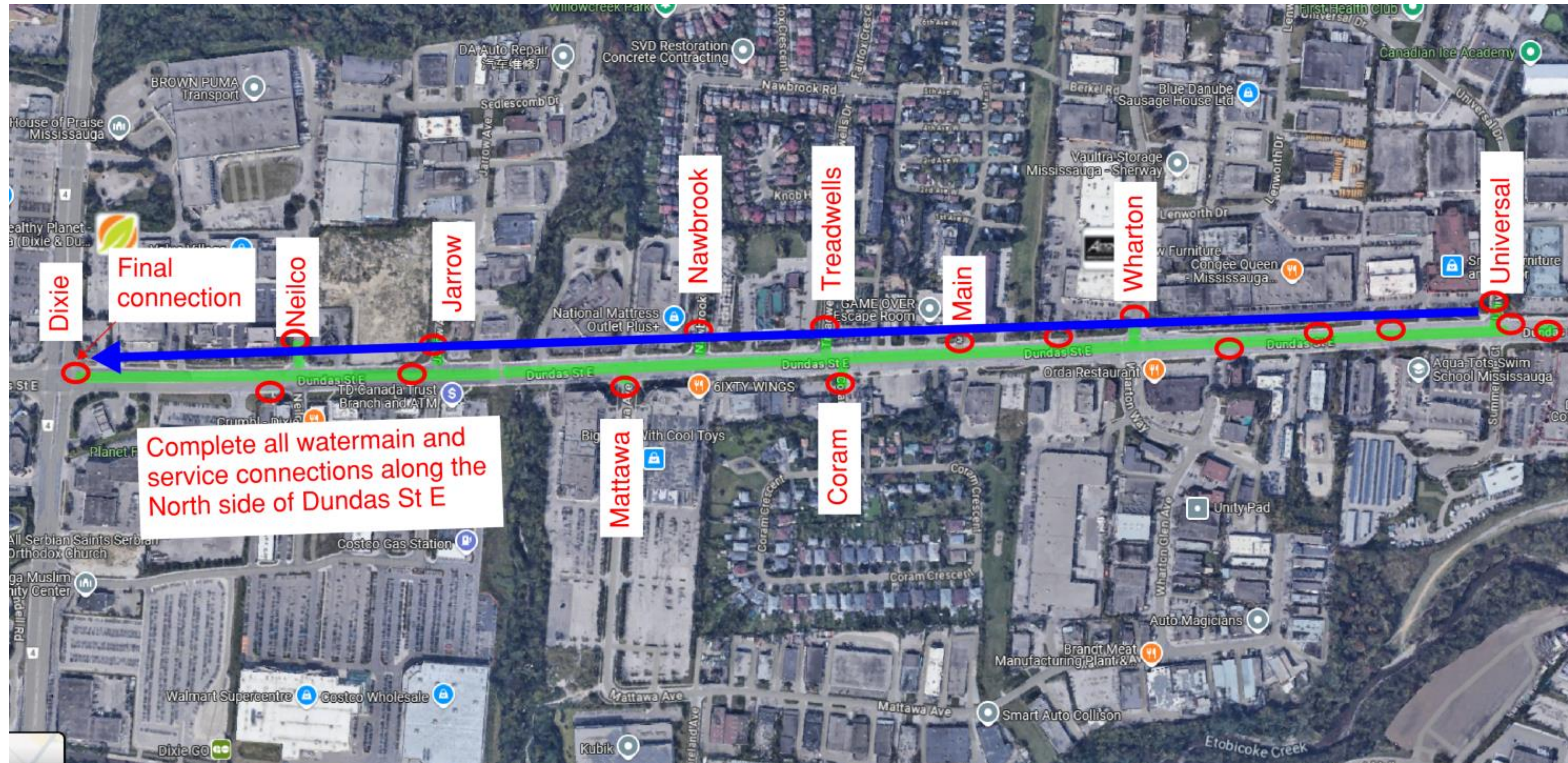
1. Start by connecting to existing system at Mattawa Ave.
2. Moving East, complete all connections on South side of Dundas St E
3. Make the Universal connections and cross to the North side of the road



Remaining Schedule

Connection Staging (North Side):

1. Start at Universal and move West
2. Complete all connections on North side of Dundas St E



Remaining Schedule

Connection Staging (Remainder of South side and Final Conneciton):

1. Moving East from Dixie, complete remainder of connections on South side of Dundas St E
2. Once everything is connected, the final connection is made at Dixie
3. Abandoning of existing watermain is completed



Remaining Schedule

Once connections have been completed, restoration will commence:

- Replacing asphalt, sidewalks, sod
- Requires a sub-contractor and new traffic control plans
- Sidewalks and sod will have minimal traffic impacts

Ways to lessen traffic impacts:

- Working at night where practical
- Keeping lanes open during boulevard and sidewalk work
- Complete as much road restoration as possible by Labour Day weekend

