

SURVEYOR'S REAL PROPERTY REPORT AND TOPOGRAPHY OF BLOCK J REGISTERED PLAN 719 CITY OF MISSISSAUGA REGIONAL MUNICIPALITY OF PEEL
 SCALE: 1" = 50'

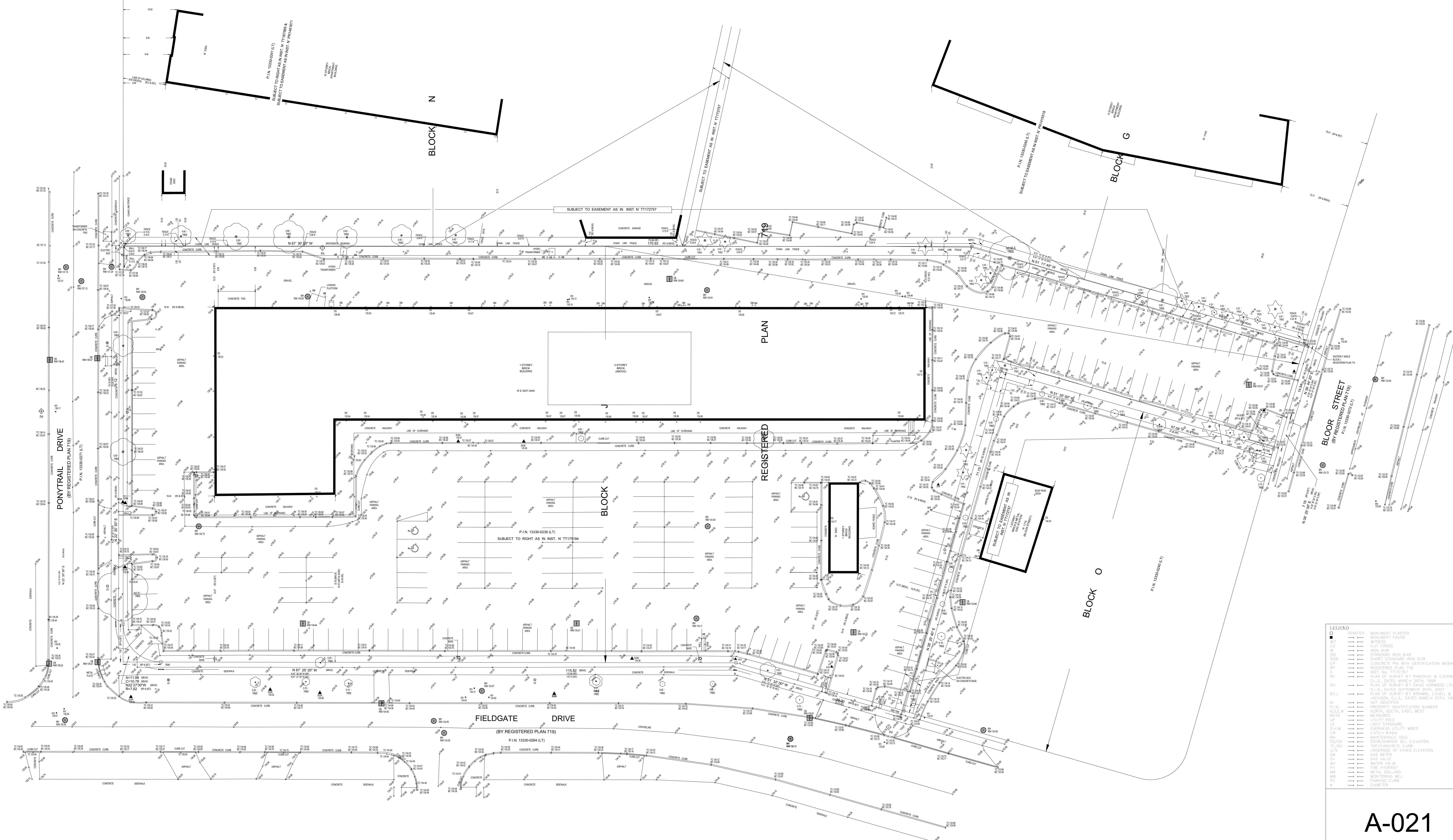
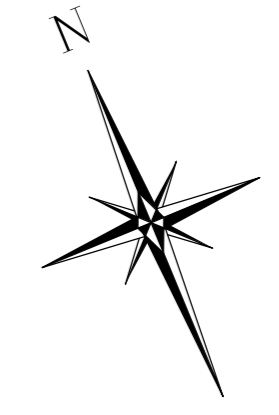
GENESIS LAND SURVEYING INC. 1000
 © COPYRIGHT 2024, GENESIS LAND SURVEYING INC. THE REPRODUCTION, ALTERATION, OR USE OF THIS REPORT, IN WHOLE OR IN PART, WITHOUT THE EXPRESS PERMISSION OF GENESIS LAND SURVEYING INC. IS STRICTLY PROHIBITED.

METRIC NOTE:
 DISTANCES SHOWN ON THIS PLAN ARE IN METRES AND CAN BE CONVERTED TO FEET BY DIVIDING BY 0.3048.

NOTE:
 1. THIS PLAN MUST BE READ IN CONJUNCTION WITH SURVEY REPORT DATED APRIL 26, 2024.
 2. THIS PLAN AND REPORT WERE PREPARED FOR SALE BY PLANING & FOR THE UNDERSIGNED ACCEPTS NO RESPONSIBILITY FOR USE BY OTHER PARTIES.

BEARING NOTE:
 BEARINGS ARE ASTROMOMIC AND ARE REFERRED TO THE SOUTHERN CORNER OF BLOCK J HAVING A BEARING OF N 67° 30' 00" W, AS SHOWN ON REGISTERED PLAN 719.

ELEVATION NOTE:
 ELEVATIONS ARE GEODETIC AND ARE REFERRED TO CITY OF MISSISSAUGA BENCHMARK N 038 HAVING A PUBLISHED ELEVATION OF 135.546 METRES (CGVD-1985; NOT 1919 SOUTHERN) ZONING REQUIREMENT.



LEGEND

■	MONUMENT PLANTED
□	MONUMENT FOUND
○	WELLS
+	CURT CROSS
—	IRON BAR
—	STANDARD IRON BAR
—	SHORT STANDARD IRON BAR
—	CONCRETE PIN WITH IDENTIFICATION WASHER
—	REGISTERED PLAN 719
—	INST. N 11172757
—	PLAN OF SURVEY BY RABDEAU & CZERNISZ, Q.S., DATED MARCH 20TH, 1989
—	PLAN OF SURVEY BY DAVID HIRSHWOOD LTD., Q.S., DATED SEPTEMBER 20TH, 2007
—	PLAN OF SURVEY BY BROWNE, CAVALLI & JACKSON, Q.S., DATED MARCH 20TH, 1988
N	NOT IDENTIFIED
P.I.N.	PROPERTY IDENTIFICATION NUMBER
N 038	NORTH, SOUTH, EAST, WEST
MASD	MAGNETIC DEVIATION
UP	UTILITY POLE
—	LIGHT STANDARD
—	OVERHEAD UTILITY WIRES
—	CATCH BASIN
—	MAINTENANCE HOLE
—	UNDERGROUND SILE ELEVATION
—	TOP/CONCRETE CURB
—	UNDERSCORE OF CAVES ELEVATION
—	GAS METER
—	GAS VALVE
—	WATER VALVE
—	FIRE HYDRANT
—	METAL BOLLARD
—	MONITORING WELL
—	PARKING CURB
—	DIMETER

A-021