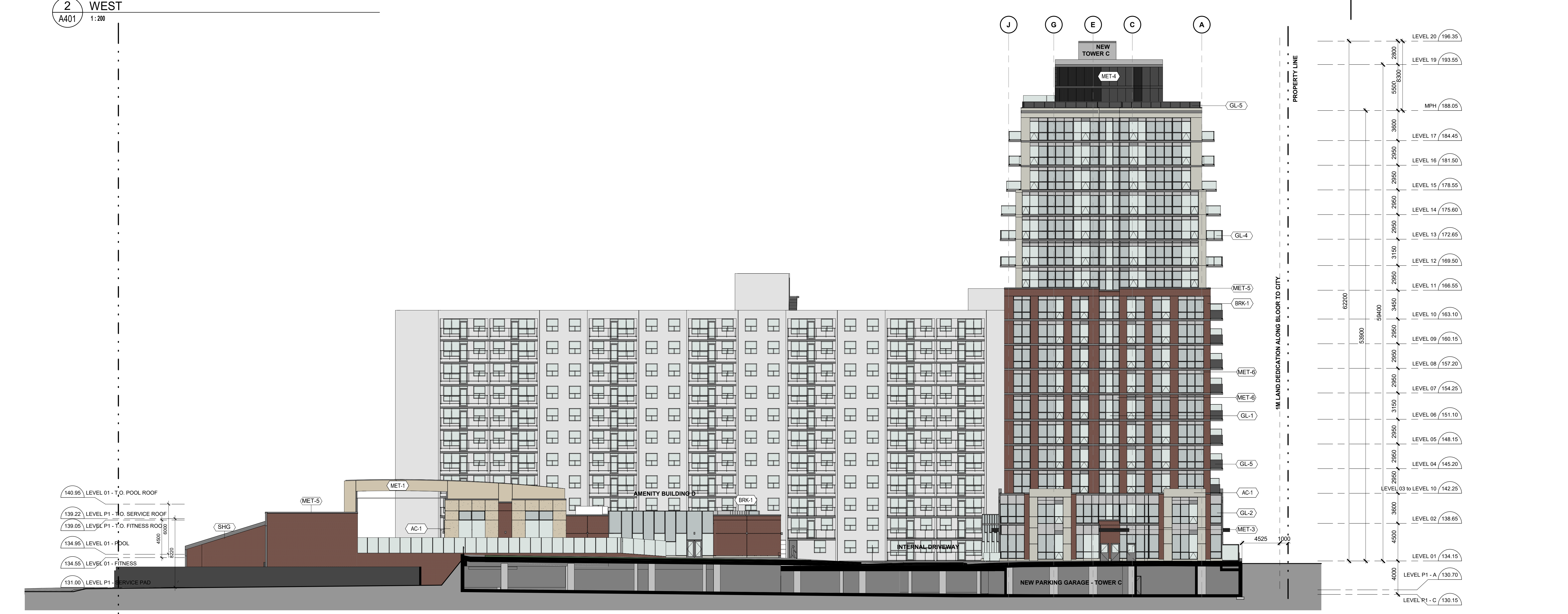
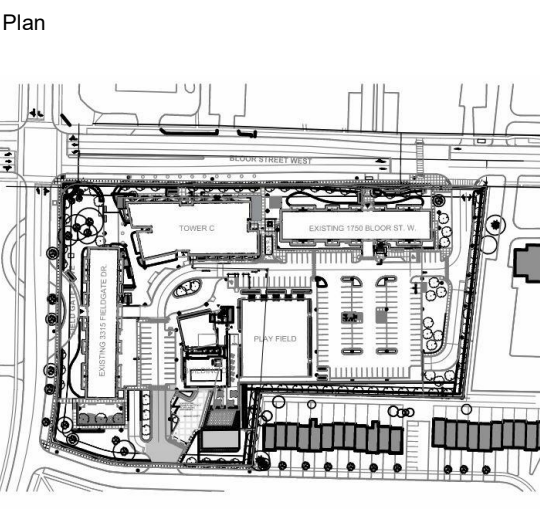


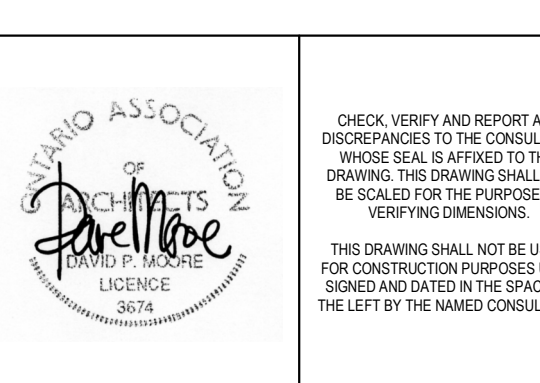
2 WEST
A401 1:20



1 EAST
A401 1:20



ISSUE	TITLE	DATE
1	ISSUED FOR OPA AND ZBA	20170321
2	RE-ISSUED FOR OPA AND ZBA	20180420
3	RE-ISSUED FOR OPA AND ZBA	20180716
4	RE-ISSUED FOR OPA AND ZBA	20180824
5	RE-ISSUED FOR OPA AND ZBA	20180904
6	RE-ISSUED FOR OPA AND ZBA	20180929
7	ISSUED FOR SPA	20180929



WZMH
WZMH Architects
85 St. Clair Ave. W., Suite 1500
Toronto, Ontario, Canada M5V 1N6
Tel: 416-461-4111
www.wzmm.com

Timbercreek
1750 BLOOR ST.
BLOCK B, REGISTERED PLAN 723
MISSISSAUGA, ON

Drawing Title
**TOWER C & BUILDING D
ELEVATIONS LOOKING
EAST & WEST**

Date: 09/30/20 Scale: 1 : 200
Drawn By: [Name] Paper No: [Number]
Checked By: [Name]
Project No: 07803.000
Drawing No: [Number]

A401